

Ford

B-MAX



Go Further



Visionary. Ingenious. Remarkable.
Every car bears his signature.

Henry Ford



Unlock extra content online. Use an appropriate app on your smartphone or tablet to scan the QR codes in this brochure.





B-MAX gives you more.

Much more.



1.5m

Opening the front and sliding rear doors gives you an unobstructed 1.5m wide aperture on each side, making it easier to load and unload, get in and get out. The unique **Ford Easy Access Door System** achieves this by cleverly concealing its central strengthening pillar within the doors, rather than having it fixed into the bodyside.



Use your voice like another pair of hands.

Ford SYNC with AppLink* lets you play music, make and receive hands-free calls and even control apps* on your smartphone – all with simple voice commands. In the event of a collision, the **Ford Emergency Assistance#** feature is designed to assist occupants to place an emergency call and provide the emergency services with vehicle location information.



*Compatible mobile phone required. You can browse a list of AppLink-compatible apps from www.Ford.co.uk, or via the **App Catalog** available in iOS and Android stores. SYNC AppLink is not supported by all European languages.
#Ford Emergency Assistance is an innovative SYNC feature that uses a Bluetooth®-paired and connected mobile phone to help vehicle occupants initiate a direct call to the local Communications Centre, following a vehicle crash event involving an airbag deployment or fuel pump shut off. The feature operates in more than 40 European countries and regions. Emergency Assistance is not supported by all European languages.



“Call Dad”

“Shuffle”

“Read message”

“Call office”

“Play album Greatest Hits”

“Call Chris”

“Call home”

“List mobile apps”


“What’s playing?”

Active City Stop* can apply the brakes automatically

Designed to help reduce the likelihood or consequences of your car colliding with the vehicle in front in slow-moving traffic by applying the brakes if it is detected that a collision is likely. (Option on Zetec Navigator, Titanium Navigator & Titanium X Navigator)
(Not available with 1.4 90 PS Petrol Engine)



*Designed to operate at speeds below 19mph.



Bring the outside inside.
(Panorama roof standard
on Titanium X Navigator)

Enjoy a better view.

The high seating position gives you a commanding view of the road, while the full-length glass panorama roof makes the interior bright and airy (standard on Titanium X Navigator). High-quality materials and attention to detail are defining characteristics of the B-MAX. The result is an interior designed to lift your mood.





Ford EcoBoost

The coating on the piston rings reduces friction; the turbocharger, direct injection and variable valve timing boost efficiency. The result is remarkable performance from such an economical engine. Now a five times winner at the International Engine of the Year Awards, the 1.0-litre EcoBoost is available in 100 PS and 125 PS versions.



Powered by **FORD EcoBoost**



More power. Less fuel. Lower emissions.

With the help of **Ford ECONetic Technology**, B-MAX's latest engines are remarkably fuel-efficient. The 1.0 Ford EcoBoost 125 PS petrol engine produces 39 per cent more maximum power than the larger capacity 1.4 90 PS, and yet can achieve around 22 per cent better fuel economy on the combined test cycle and has 18 per cent lower CO₂ emissions. The 1.5 Duratorq TDCi 95 PS diesel engine is even more frugal, with CO₂ emissions of just 98 g/km*. (*See Fuel, performance & emissions figures on page 54)

***98g/km CO₂**



Zetec Navigator

Exterior Features

- 15" 5-spoke alloy wheels
- Body colour bumpers and door handles
- Ford Easy Access Door System
- Body colour electrically operated door mirrors with integrated side indicators
- Halogen projector headlights with LED daytime running lights
- Headlight courtesy delay
- Front fog lights
- Chrome finish on upper door line
- Chrome surround front grille
- Ford Easy-Fuel
- Tyre Pressure Monitoring System (TPMS)
- Tyre repair kit

Interior features

- Ford Navigation System with DAB radio/CD including Ford SYNC with Emergency Assistance* and six speakers
- USB connectivity for external music devices
- Electrically operated front and rear windows with global opening and closing
- Manual air conditioning
- Quickclear heated windscreen
- Height- and reach-adjustable steering column
- Leather-trimmed steering wheel with remote audio controls
- Leather trimmed gearshift knob
- Ambient lighting in front compartment and footwells
- MyKey®
- Trip Computer

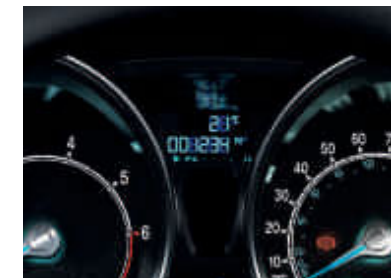
Engines

- Petrol:
- 1.4 Duratec (90 PS)
 - 1.0 Ford EcoBoost (100 PS)
 - 1.0 Ford EcoBoost (125 PS) with Auto-Start-Stop
 - 1.6 Duratec (105 PS) PowerShift Diesel:
 - 1.5 TDCi (75 PS) with Auto-Start-Stop
 - 1.5 TDCi (95 PS) with Auto-Start-Stop

*Ford Emergency Assistance is an innovative SYNC feature that uses a Bluetooth®-paired and connected mobile phone to help vehicle occupants initiate a direct call to the local Communications Centre, following a vehicle crash event involving an airbag deployment or fuel pump shut off. The feature operates in more than 40 European countries and regions. Emergency Assistance is not supported by all European languages.



Manual air conditioning.



Trip computer.



Titanium Navigator

Key exterior features additional to Zetec

- 16" 10-spoke alloy wheels
- High gloss black front grille with chrome surround
- Auto headlamps
- Rain-sensing wipers
- Power-foldable door mirrors

Key interior features in addition to Zetec

- Sony Navigation System with DAB radio/CD including Ford SYNC with Emergency Assistance* and eight speakers
- Electronic Automatic Temperature Control (EATC)
- Cruise control
- Auto-dimming rear-view mirror
- Luxury front and rear floor mats
- Driver's seat with adjustable lumbar support
- Rear seat centre armrest

Engines

- Petrol:
- 1.0 Ford EcoBoost (100 PS)
 - 1.0 Ford EcoBoost (125 PS) with Auto-Start-Stop
 - 1.6 Duratec (105 PS) PowerShift
- Diesel:
- 1.5 TDCi (95 PS) with Auto-Start-Stop



LED daytime running lights.



Chrome side window finisher.



*Ford Emergency Assistance is an innovative SYNC feature that uses a Bluetooth®-paired and connected mobile phone to help vehicle occupants initiate a direct call to the local Communications Centre, following a vehicle crash event involving an airbag deployment or fuel pump shut off. The feature operates in more than 40 European countries and regions. Emergency Assistance is not supported by all European languages.



Titanium X Navigator

Exterior features additional to Titanium

- 16" 11-spoke alloy wheels
- Panorama roof with sunblind
- Rear privacy glass

Interior features additional to Titanium

- Partial leather-trimmed heated front seats
- Ford KeyFree system – including keyless entry and Ford Power Starter Button
- Aluminium threshold plates front and rear with B-MAX branding

Engines

Petrol:

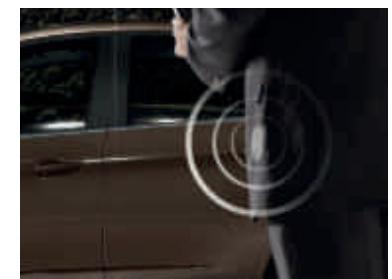
1.0 Ford EcoBoost (125 PS) with Auto-Start-Stop

1.6 Duratec (105 PS) PowerShift Diesel:

1.5 TDCi (90 PS) with Auto-Start-Stop



16" 11-spoke alloy wheels.



Ford KeyFree system.

Find extra pleasure in the small details.



MyKey®

MyKey® is an innovative programmable feature that encourages safer driving. MyKey® lets you tailor car settings to suit individual users. These settings include maximum speed and maximum audio volume. You can also prevent deactivation of driver assistance features where fitted. MyKey® settings are automatically activated each time MyKey® is used. (Standard on all models)



Cruise control

With steering wheel-mounted controls for extra comfort and convenience. (Standard on Titanium Navigator & Titanium X Navigator)



Tyre Pressure Monitoring System

Alerts you if it detects that a tyre's pressure is too low, such as in the case of a puncture. (Standard)



Rear-view camera

Select reverse gear and the rear-view camera comes on automatically in the central display, allowing you to see objects behind your car. Special guidance graphics help safer and easier manoeuvring. (Option as part of the Rear View Camera Pack on Titanium Navigator and Titanium X Navigator)





Race Red
Standard body colour



Frozen White
Premium body colour*



Magnetic
Premium body colour*



Burnished Glow
Exclusive body colour*



Blazer Blue
Standard body colour



Moondust Silver
Premium body colour*



Deep Impact Blue
Premium body colour*



White Platinum
Exclusive body colour*



Shadow Black
Premium body colour*



Ruby Red
Exclusive body colour*

We chose
Burnished Glow.
What will you
choose?

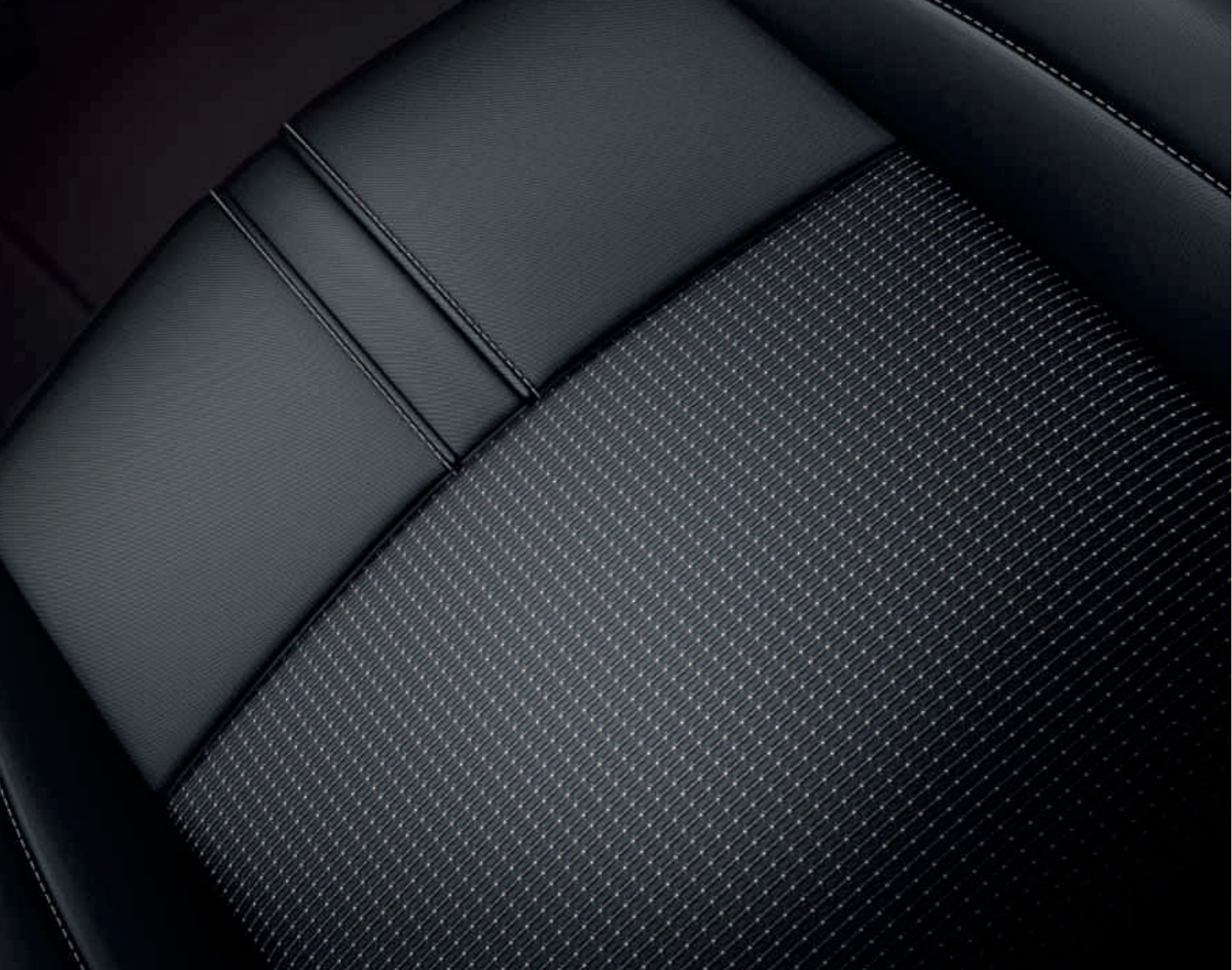
The Ford B-MAX owes its beautiful and durable exterior to a special multi-stage painting process. From the wax-injected steel body sections to the water-based top coat, new materials and application processes ensure it's not only virtually solvent-free, but will retain its good looks for many years to come.

*At extra cost.

The Ford B-MAX is covered by the Ford Perforation Warranty for 12 years from the date of first registration. Subject to terms and conditions.

Note The car images used are to illustrate body colours only and may not reflect current specific Colours and trims reproduced within this brochure may vary from the actual colours, due to the limitations of the printing processes used.





A feel for comfort.

1. New York in Ebony seat insert for Zetec Navigator and Titanium Navigator
2. New York in Medium Light Stone seat insert for Titanium Navigator
3. Shown on right: New York in Ebony seat insert with Torino leather in Ebony seat bolster for Titanium X Navigator





Wheels



15" 5-spoke alloy wheel
(Standard on Zetec Navigator)



16" 10-spoke alloy wheel
(Standard on Titanium Navigator)



16" 11-spoke alloy wheel.
(Standard on Titanium X Navigator)



17" 5-spoke alloy wheel
(Option on Titanium Navigator & Titanium X Navigator series)



Wheel availability	Zetec Navigator	Titanium Navigator	Titanium X Navigator
Alloy – 15"x6", 5-spoke, 195/60 tyres*	●	-	-
Alloy – 16"x6½", 10-spoke, 195/55 tyres*	-	●	-
Alloy – 16"x6½", 11-spoke, 195/55 tyres*	-	-	●
Alloy – 17"x7", 5-spoke, 205/45 tyres* (Spare wheel not available)	-	○	○
Tyre repair kit	●	●	●
Spare Wheel – 14" Steel wheel, 125/80 tyre*	○	○	○
Locking wheel nuts	●	●	●

● = Standard, ○ = Optional, at extra cost, □ = Part of an option park, at extra cost.
*The wheel you choose will be fitted with the tyre size noted, but no choice of tyre brand is available.



Obsessively driven
During its development, we test drove the B-MAX the equivalent of 87 times around the globe. It's a car you can rely on, right down to the smallest ball bearing.



Exterior features

Exterior design features

	Zetec Navigator	Titanium Navigator	Titanium X Navigator
Bright finish on upper door line	●	●	●
Panorama roof (includes sunblind)	-	-	●
Bumpers – Front and rear, body colour	●	●	●
Door handles – Body colour	●	●	●
Door mirrors – Body colour housing, heated, electrically-operated, integrated side indicators	●	-	-
Door mirrors – Body colour housing, heated, electrically-operated, power-foldable, integrated side indicators	□	●	●
Doors – Ford Easy Access Door System	●	●	●
Front lower grille – Self colour with chrome surround	●	-	-
Front lower grille – High gloss with chrome surround	-	●	●
Front fog lights	●	●	●
Tailgate handle – Body colour	●	●	●

● = Standard, ○ = Optional, at extra cost, □ = Part of an option pack, at extra cost.

*The wheel you choose will be fitted with the tyre size noted, but no choice of tyre brand is available.

Blue skies in the day, moon and stars at night

Sky-high view

The full-length glass panorama roof delivers a bright, airy interior. A Solar Reflect coating helps keep the interior cool, while an internal blind provides shade and privacy when required. (Standard on Titanium X Navigator)



Exterior features

	Zetec Navigator	Titanium Navigator	Titanium X Navigator
Exterior convenience features			
Ford Easy-Fuel capless refuelling system	●	●	●
Headlights – Twin chamber halogen reflector headlights	●	●	●
Headlights – Courtesy delay	●	●	●
Headlights – LED daytime running lights with halogen projector light	●	●	●
Headlights – Automatic headlights	-	●	●
Wipers – Standard with variable intermittent wipe and electric wash	●	-	-
Wipers – Front, automatic with rain sensor	-	●	●
Quickclear heated windscreen	●	●	●

● = Standard, ○ = Optional, at extra cost, □ = Part of an option park, at extra cost.

*The wheel you choose will be fitted with the tyre size noted, but no choice of tyre brand is available.

Option packs

	Zetec Navigator	Titanium Navigator	Titanium X Navigator
Option packs			
City Pack – Rear parking distance sensors and electric/heated power-foldable door mirrors	○	-	-
City Pack – Rear parking distance sensors (electric/heated power-foldable door mirrors standard)	-	○	○
Rear Privacy Glass	○	○	●
Rear View Camera Pack – Rear view camera and front and rear parking sensors. (Not available with City Pack)	-	○	○
Tidy Pack – Reversible and foldable luggage compartment mat, luggage compartment organiser and rear seat back net	○	○	○
Rear spoiler – Body colour	○	○	○

● = Standard, ○ = Optional, at extra cost, □ = Part of an option park, at extra cost.

*The wheel you choose will be fitted with the tyre size noted, but no choice of tyre brand is available.

Someone misfuels every 3 minutes
– that's why we invented Ford Easy-Fuel



Capless refuelling with Ford Easy-Fuel

No dirty fuel caps to touch. Plus Ford Easy-Fuel with its unique safeguard ensures nobody accidentally fills up with the wrong fuel. (Standard)



Rear spoiler, painted in body colour

Gives an aerodynamic finish to the roof line. (Optional on Zetec Navigator, Titanium Navigator and Titanium X Navigator. Also available as an accessory)

Interior features

Interior design features	Zetec Navigator	Titanium Navigator	Titanium X Navigator
Door handles – Satin finish surround	●	●	●
Floor mats – Front and rear, velour	-	●	●
Gearshift knob – Leather-trimmed (manual transmission only)	●	●	●
Threshold plates – Front and rear, aluminium design with embossed 'B-MAX' script	-	-	●
Steering wheel – 3-spoke, leather-trimmed with Silver insert	●	●	●
Steering column – Rake- and reach-adjustable	●	●	●

● = Standard, ○ = Optional, at extra cost, □ = Part of an option park, at extra cost.



Spend time surrounded in luxury

Threshold plates, front and rear with 'B-MAX' logo

Threshold plates look great and protect your door sills from scratches and scrapes. (Standard on Titanium X Navigator and available as an accessory)

Interior features

Audio and communication systems	Zetec Navigator	Titanium Navigator	Titanium X Navigator
Radio/CD/SD-Navigation with DAB , 5" TFT display, six speakers (four front, two rear), remote audio controls, AUX and USB connection for external music devices, Ford SYNC (Bluetooth® hands-free phone with Voice Control System, Ford AppLink and Ford Emergency Assistance*)	●	-	-
Sony radio/CD/SD-Navigation with DAB , 5" TFT display, eight speakers (four front, four rear), remote audio controls, AUX and USB connection for external music devices, Ford SYNC (Bluetooth® hands-free phone with Voice Control System, Ford AppLink and Ford Emergency Assistance*)	-	●	●
Climate control			
Air conditioning – Manual control	●	-	-
Air conditioning – Electronic Automatic Temperature Control (EATC)	-	●	●

● = Standard, ○ = Optional, at extra cost, □ = Part of an option park, at extra cost.

The Bluetooth® word mark and logos are owned by the Bluetooth SIG, Inc. and any use of such marks by Ford Motor Company is under licence. Other trademarks and trade names are those of their respective owners.

*Ford Emergency Assistance is an innovative SYNC feature that uses a Bluetooth® - paired and connected mobile phone to help vehicle occupants initiate a direct call to the local Communications Centre, following a vehicle crash event involving an airbag deployment or fuel pump shut off. The feature operates in more than 40 European countries and regions. Emergency Assistance is not supported by all European languages.

Electronic Automatic Temperature Control (EATC) air conditioning

Adjusts the interior temperature to the level you set, and ensures it remains there, no matter how the weather changes outside. (Standard on Titanium Navigator & Titanium X Navigator)



Connect with your world

With built-in connectivity for your gadgets, you can fill your B-MAX with your favourite music – and connect to the outside world – with a choice of superb audio, navigation and entertainment systems.



Remote audio controls

Your hands on the wheel and your MP3 on the right track. (Remote audio controls shown on left are standard)

Shown right: Sony radio/CD/SD-navigation system with DAB and 5.0" TFT display

The SD-navigation system features an enhanced instrument cluster navigation display with easy-to-follow route guidance. (See page 43 for availability)

USB interface

Built-in connectivity for your smartphone, MP3 player or USB stick. Lets you listen to, and operate, your player via the car's audio system.





Interior features

Interior convenience features

	Zetec Navigator	Titanium Navigator	Titanium X Navigator
Cruise control	-	●	●
Centre console – Includes stowage tray, bottle/can holder and front and rear 12 V power points	●	●	●
Child observation mirror, located in overhead console	●	●	●
Courtesy light – Front, with map-reading lights	●	●	●
Ambient Lighting – In front compartment and footwell	●	●	●
Glovebox illumination	●	●	●
Rear view mirror – Auto-dimming	-	●	●
Windows – Electrically-operated front and rear with one-touch lowering/closing	●	●	●
Windows – One-touch remote control opening/closing of all side windows simultaneously (global closing)	●	●	●
Trip computer	●	●	●

Seats

	Zetec Navigator	Titanium Navigator	Titanium X Navigator
Front seats – Driver's seat armrest	-	○	○
Front seats – Driver's manual height and fore/aft adjustment	●	●	●
Front seats – Driver's manual lumbar support adjustment	-	●	●
Front seats – Partial leather seats	-	-	●
Front seats – Passenger's manual fore/aft adjustment	●	●	●
Front seats – Heated cushion and seatback	○	○	●
Front seats – Passenger's fold-flat seat with hard seat back	●	●	●
Front seats – Seatback map pocket (Driver seat only)	●	●	●
Rear seats – 'One Hand One Motion' fold and dive mechanism	●	●	●
Rear seats – 60:40 split folding back and fixed cushion	●	●	●
Rear seats – Folding centre armrest	-	●	●

● = Standard, ○ = Optional, at extra cost, □ = Part of an option pack, at extra cost.

Interior features

Loadspace	Zetec Navigator	Titanium Navigator	Titanium X Navigator
Removable package tray	●	●	●
Adjustable load floor – Articulated for use as a divider (including hand-free 60° opening/fixing system)	●	●	●
Luggage compartment organiser (located beneath adjustable load floor) – Part of Tidy Pack	□	□	□
Reversible foldable luggage compartment mat – Part of Tidy Pack	□	□	□
Rear seat back net – Part of Tidy Pack	□	□	□
Tie-down hooks	●	●	●

● = Standard, ○ = Optional, at extra cost, □ = Part of an option pack, at extra cost.

2.35m loadspace length



Truly usable space

Seven different seat-folding combinations, a generous 2.35m maximum load length and an adjustable luggage compartment floor ensures the B-MAX is ready for all kinds of cargo.

Smart technology

B-MAX has a range of intelligent features designed to make life a little easier and offer peace of mind.

1 Active City Stop[®]

Designed to help reduce the likelihood or consequences of your car colliding with the vehicle in front in slow-moving traffic by applying the brakes if it is detected that a collision is likely. (Option on Zetec Navigator, Titanium Navigator & Titanium X Navigator) (Not available with 1.4 petrol engine)

2 Ford SYNC with Emergency Assistance*

The next generation of in-car connectivity. Ford SYNC lets you operate most popular MP3 players, Bluetooth[®]-enabled phones and USB drives with remarkably simple voice commands, plus the Ford Emergency Assistance feature is designed to assist occupants to place an emergency call in the event of an accident. (Standard)

3 Parking distance sensors

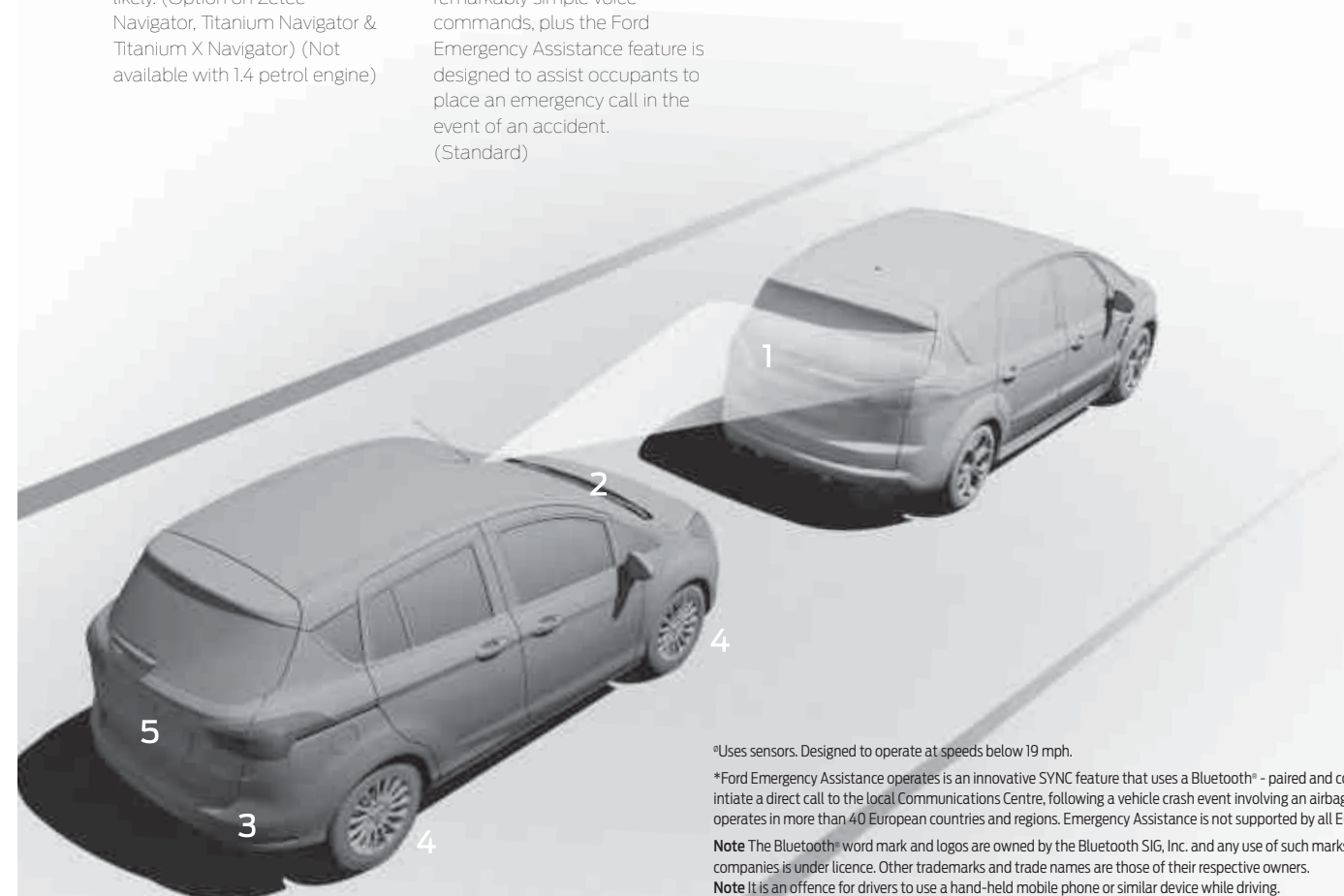
Audible warnings help you park in tight spaces. Available for front and rear, or just rear. (See page 41 for availability)

4 Tyre Pressure Monitoring System

Designed to alert you if a tyre's pressure is too low, such as in the case of a puncture. (Standard)

5 Integrated navigation and rear-view camera

B-MAX's built-in navigation system eliminates the need for pre-route planning.



Select reverse gear and the rear-view camera comes on automatically in the Sony radio or navigation display, allowing you to see objects behind your car. (See page 41 for availability)



[®]Uses sensors. Designed to operate at speeds below 19 mph.

*Ford Emergency Assistance operates as an innovative SYNC feature that uses a Bluetooth[®] - paired and connected mobile phone to help vehicle occupants initiate a direct call to the local Communications Centre, following a vehicle crash event involving an airbag deployment or fuel pump shut off. The feature operates in more than 40 European countries and regions. Emergency Assistance is not supported by all European languages.

Note The Bluetooth[®] word mark and logos are owned by the Bluetooth SIG, Inc. and any use of such marks by Ford Motor Company Limited and its associated companies is under licence. Other trademarks and trade names are those of their respective owners.

Note It is an offence for drivers to use a hand-held mobile phone or similar device while driving.

Intelligent Protection System (IPS)[®]

Ford B-MAX's advanced Intelligent Protection System (IPS) uses a range of sophisticated technologies designed to help keep you protected, including an ultra-high strength steel safety cage, Electronic Stability Programme (ESP) with anti-lock braking system and Emergency Brake Assist.

The Ford B-MAX IPS includes:

1. **Driver's and front passenger's airbags*** with passenger airbag deactivation switch and driver's **knee airbag**
2. Driver's and front passenger's **side impact airbags**
3. **Collapsible steering column** for optimised energy absorption and driver's legs protection
4. **Side curtain airbags** for both front and outer rear passengers
5. Robust computer-optimised body structure with **ultra-rigid safety cell** and crumple zones
6. Advanced lap and diagonal **inertia reel seat belts** on all seats. Pre-tensioners and load-limiting retractors on front seats
7. **ISOFIX child seat mountings** on outer rear seats for increased child safety in combination with selected child seats. (Child seats available as an accessory)
8. **Anti-submarining seat bases** reduce the tendency to slide beneath the seatbelt in a severe frontal collision

*Note: A child seat should never be placed in the front passenger seat when the Ford vehicle is equipped with an operational front passenger's airbag. The safest place for children is properly restrained on the rear seat.

[®]Uses sensors.



Safety and security equipment

	Zetec Navigator	Titanium Navigator	Titanium X Navigator
Safety and driver assistance			
Intelligent Protection System (IPS)	●	●	●
Electronic Stability Programme (ESP) with Emergency Brake Assist (EBA) and Traction Control	●	●	●
Hill Start Assist (not available with 1.4 Duratec petrol engine)	●	●	●
Airbags – Driver's and front passenger's (single stage) [♦]	●	●	●
Airbag – Front passenger's airbag de-activation switch	●	●	●
Airbags – Curtain airbags (front and rear) – Driver's and front passenger's side airbags (thorax only) and driver's knee airbag	●	●	●
Active City Stop [°] – (Not available with 1.4 Petrol Engine)	○	○	○
Tyre Pressure Monitoring System (TPMS)	●	●	●
Seats – ISOFIX mounting provision for child seat (outer rear seats)	●	●	●
Security			
Remote central/double locking	●	●	●
Thatcham Category 1 perimeter and volume-sensing alarm	○	●	●
Ford KeyFree System – Includes Keyless entry and Ford Power Starter Button	-	○	●
MyKey [°]	●	●	●

● = Standard, ○ = Optional, at extra cost

***Note: A child seat should never be placed in the front passenger seat when the Ford vehicle is equipped with an operational front passenger's airbag. The safest place for children is properly restrained on the rear seat.**

[°]Uses sensors. Designed to operate at speeds below 19mph.



Integral safety and strength

Ford B-MAX's body includes 55 per cent high strength steel and 26 per cent ultra-high strength boron steel. This makes it lighter, stronger and stiffer – and an immensely rigid base upon which to attach the Ford Easy Access Door System[®]. When closed the front and rear doors overlap to create a rigid central strengthening pillar and to prevent them from opening in a side impact.

Mechanical features

	Zetec Navigator	Titanium Navigator	Titanium X Navigator
Brakes			
Brake System – Smart regenerative charging (not available with 1.4 Duratec and 1.6 Duratec Ti-VCT petrol engines)	●	●	●
Steering			
Electric power-assisted steering (EPAS)	●	●	●
Suspension			
Suspension – Front stabiliser bar	●	●	●
Technology			
Ford Eco Mode (driver information system)	●	●	●
Auto-Start-Stop System (available in conjunction with 1.0 EcoBoost 125 PS & 140 PS and 1.5 TDCi 75 PS & 95 PS engines – Standard)	○	○	○
Torque Vectoring Control [°]	●	●	●

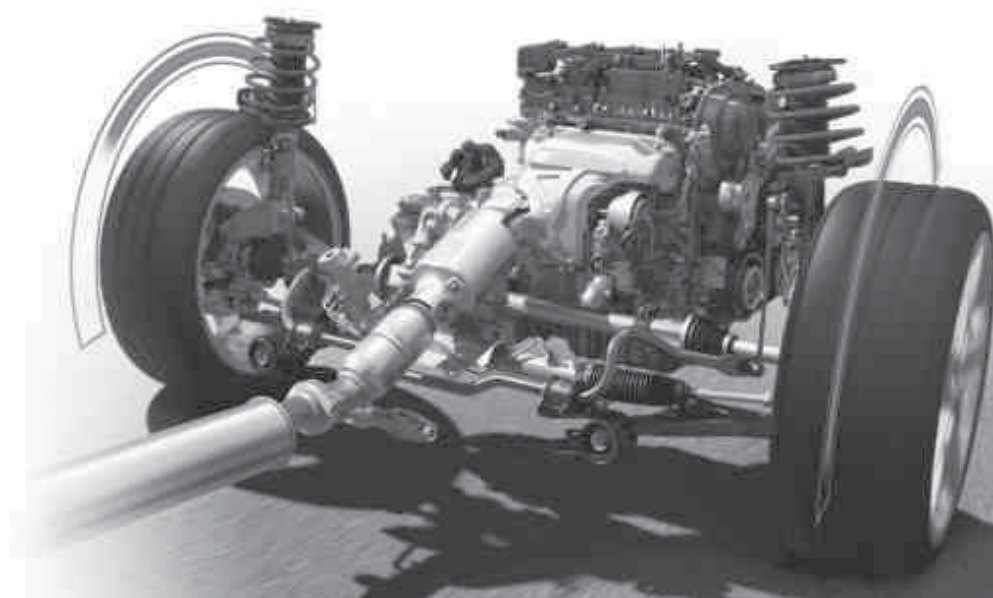
● = Standard, ○ = Optional, at extra cost.

Reacts to road surfaces 100 times per second

Torque Vectoring Control[°]

Designed to improve traction, roadholding and agility when cornering by continuously optimising the engine torque distributed to each front wheel to match the amount of grip each has available. The result is a more rewarding driving experience. (Standard)

[°]Uses sensors.

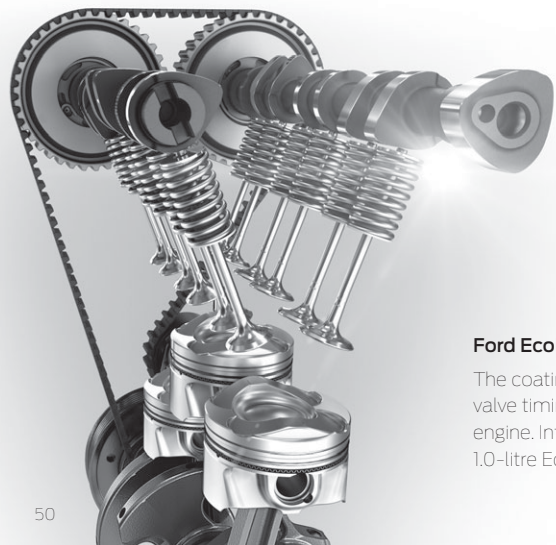


Fuel, performance and emissions

The fuel economy figures quoted in the table below are achieved by following strict EU governed test procedures and are specifically designed to enable customers to compare vehicles from all manufacturers on a like-for-like basis. Fuel consumption is directly affected by the length of the journey; number of passengers and amount of luggage carried; individual driving style; road and traffic conditions; weather conditions; vehicle age, mileage, condition and standard of maintenance; use of vehicle features such as air conditioning; and any modifications to the vehicle such as the addition of a roof rack. Your fuel economy will vary based on these and other factors and, for these reasons, many drivers may not achieve the EU fuel economy figures (below) in day-to-day driving, although the vehicle is technically capable of doing so.

	Euro Stage	Trans	Maximum Power PS (kW)	Torque Nm (Nm with overboost)	CO ₂ emissions ⁹⁰ (g/km)	Fuel consumption MPG (L/100km) ⁹⁰			Performance ⁹⁰			
						Urban	Extra Urban	Combined	Max. speed (mph)	0-62 mph (secs)	31-62 mph* (secs)	
5-door												
1.0 EcoBoost (100 PS)	Euro Stage VI	M5	100 (74)	170	119	42.8 (6.6)	65.7 (4.3)	55.4 (5.1)	109	13.2	12.1	
1.0 EcoBoost (125 PS) with Auto-Start-Stop	Euro Stage VI	M5	125 (92)	170 (200)	114	47.1 (6.0)	67.3 (4.2)	57.7 (4.9)	117	11.2	9.7	
1.4 Duratec (90 PS)	Euro Stage VI	M5	90 (66)	128	139	35.8 (7.9)	57.7 (4.9)	47.1 (6.0)	106	13.8	20.4	
1.6 Duratec Ti-VCT (105 PS) PowerShift	Euro Stage VI	A6	105 (77)	150	149	32.8 (8.6)	55.4 (5.1)	44.1 (6.4)	112	12.1	n/a	
1.5 Duratorq TDCi (75 PS) with Auto-Start-Stop	Euro Stage VI	M5	75 (55)	190	98	70.6 (4.0)	78.5 (3.6)	74.3 (3.8)	98	15.1	15.9	
1.5 Duratorq TDCi (95 PS) with Auto-Start-Stop	Euro Stage VI	M5	95 (70)	215	98	70.6 (4.0)	78.5 (3.6)	74.3 (3.8)	108	13.0	13.8	

*In 4th gear. ⁹⁰Ford test figures. ⁹⁰The declared fuel consumptions and CO₂ emissions are measured according to the technical requirements and specifications of the European Regulations (EC) 715/2007 and (EC) 692/2008 as last amended. Fuel consumption and CO₂ emissions are specified for a vehicle variant and not for a single car. The applied standard test procedure enables comparison between different vehicle types and different manufacturers. In addition to the fuel efficiency of a car, driving behaviour as well as other non-technical factors are very important in determining a car's fuel consumption and CO₂ emissions. CO₂ is the main greenhouse gas responsible for global warming. A guide on fuel economy and CO₂ emissions which contains data for all new passenger car models is available at any point of sale free of charge or can be downloaded under <http://carfueldata.dft.gov.uk/>.



Ford EcoBoost engine

The coating on the piston rings reduces friction; the turbocharger, direct injection and variable valve timing boost efficiency. The result is remarkable performance from such an economical engine. International Engine of the Year Awards winner in 2016 for the fifth time in a row, the new 1.0-litre EcoBoost is available in 100 PS and 125 PS versions.



EcoBoost = more power + better fuel economy

PowerShift = automatic convenience + manual performance



Ford PowerShift delivers the perfect combination between automatic convenience and manual efficiency. This 6-speed automatic transmission selects the next appropriate gear at precisely the right moment for lightning-fast gear changes, with no disruption to the flow of power. The manual mode lets you switch gears at the push of a button – no clutch pedal required. (Available with 1.6 Duratec 105 PS Petrol Engine)

Weights and loads

	Kerbweight (kg)*	Gross Vehicle Mass (kg)	Max. Towable Mass (braked) (12%) (kg)*	Max. towable Mass (unbraked) (kg)
5-door				
1.0 EcoBoost (100 PS)	1274	1760	750	635
1.0 EcoBoost (125 PS) with Auto-Start-Stop	1279	1760	750	635
1.4 Duratec (90 PS)	1275	1780	675	635
1.6 Duratec TI-VCT (105 PS) PowerShift	1309	1780	480	480
1.5 Duratorq TDCi (75 PS) with Auto-Start-Stop	1316	1780	575	575
1.5 Duratorq TDCi (95 PS) with Auto-Start-Stop	1316	1780	575	575

*Represents the lightest kerbweight assuming driver at 75 kg, full fluid levels and 90% fuel levels, subject to manufacturing tolerances and options fitted. ***Towing limits** quoted represent the maximum towing ability of the vehicle at its **Gross Vehicle Mass** to restart on a 12 per cent gradient at sea level. The performance and economy of all models will be reduced when used for towing. **Nose weight limit** is a maximum of 75 kg on all models.



Adjustable load floor can be set higher to create a flatter load space with lowered rear seats and allows items to be stored out of view.



Adjustable load floor can be removed completely or, as shown here, set low to create a deeper luggage compartment space.

Roof rails

Stylish roof rails enhance your Ford B-MAX's appearance and versatility in combination with lockable crossbars. (Accessory)

Rear bumper load protection

Protection plates are designed for each Ford model to protect against daily wear and tear. The plates combine protection with a stylish stainless steel design. (Accessory)

Detachable tow bar

For extra transport and stowage capability, the tow bar can tow up to 750 kg depending on engine. The tow bar can be detached if not in use. (Accessory)

Uebler* rear bike carrier, tow bar-mounted

High-quality tow bar-mounted bike carrier. Features practical tilting mechanism for easy access to the load compartment. (Accessory)

Load Compartment Protection

When transporting wet and dirty items it is best to protect your load compartment. Reversible mats are available, featuring a carpet as well as a durable rubber surface (option within Tidy Pack and accessory). A load compartment tray with 35mm high edges is also available, for protection that is even more hard-wearing. (Accessory)



Load Retention Systems*

Robust retention systems keep luggage safely in the load compartment. Behind the second row a guard can be installed. (Accessory)



Rubber floor mats

All-weather rubberised floor mats are tailor-made to fit perfectly and protect against dirt and damp. Securely fixed directly onto the vehicle's floor, the mat cannot slip and interfere with the pedals. (Accessory)

ClimAir®* wind deflectors

Reduce wind turbulence and noise, allowing you a more enjoyable drive with the windows down, even during light rain. (Accessory)

Mud flaps

Contoured mud flaps help to keep your Ford B-MAX clean by reducing road spray and stone chips. Available as sets for front and rear. (Accessory)

*Meets European ECE-R17.08/ISO 27955 safety requirements.
*Item covered by third party supplier's warranty, please see www.ford-accessories.co.uk for details.
For more accessories for your B-MAX visit www.ford-accessories.co.uk.
For a range of Ford branded items – from clothing to lifestyle products and model cars – visit www.fordlifestylecollection.com

Dimensions

	5-door
Overall length (mm)	4077
Overall width with mirrors (mm)	2067
Overall width without mirrors (mm)	1751
Overall width with mirrors folded (mm)	1857
Overall height (max) (mm)	1604
Minimum distance between wheel arches (in luggage compartment) (mm)	996
Turning circle – kerb to kerb (m)	10.45
Luggage capacity (litres) ‡	
5-seat mode (with tyre repair kit)	318
5-seat mode (with 14" steel spare)	304
2-seat mode (with tyre repair kit)	1386
2-seat mode (with 14" steel spare)	1372
Fuel tank capacity (litres)	
Petrol	48
Diesel	47

‡Measured in accordance with ISO 3832. Dimensions may vary dependent on the model and equipment fitted.



Ford Warranty and Servicing Plans

	All BMAX Models
3-year/60,000 miles* Ford Warranty	●
1-year/unlimited miles* Ford Assistance Roadside Cover (Europe)	●
2-year/2 services or 3 year/3 services* Ford Protect Premium Plan, including scheduled servicing and extended Ford Assistance	○
1-year/unlimited miles* Paint Warranty	●
12-year/unlimited miles* Perforation Warranty	●

● = Standard. ○ = Optional, at extra cost.

*Whichever occurs soonest; from the date of first registration. Year 1 - unlimited mileage. Subject to terms and conditions.

Colour and trim

Model	Zetec Navigator	Titanium Navigator	Titanium X Navigator
Trim	New York in Ebony	New York in Ebony	New York in Medium Light Stone
Seat bolster trim and colour	Lux in Ebony	Lux in Ebony	Lux in Medium Light Stone
Door trim and colour	Ambassador in Ebony	Ambassador in Ebony	Ambassador in Ebony
Centre stack bezels/Door handle deco strips	Royal Black Gloss/Royal Black Gloss	Royal Black Gloss/Royal Black Gloss	Royal Black Gloss/Royal Black Gloss
Upper instrument panel/Environment colour	Ebony/Ebony	Ebony/Ebony	Ebony/Medium Light Stone
Standard body colours			
Blazer Blue	●	●	●
Race Red	●	●	-
Premium body colours			
Frozen White	○	○	○
Deep Impact Blue	○	○	-
Magnetic	○	○	○
Moondust Silver	○	○	○
Shadow Black	○	○	○
Exclusive body colours			
Platinum White	○	○	○
Ruby Red	○	○	-
Burnished Glow	○	○	○

● = Available, ○ = Optional, at extra cost.

Bodystyle: _____ Series: _____

Engine: _____

Transmission: _____

Colour: _____

Trim: _____

Wheels: _____

Audio: _____

Options: _____

Option Packs: _____

Accessories: _____

Finance: _____

Choose

Specify your new car right down to the wheels, audio, options and accessories then visit your Ford dealer.

You can specify your new car online using the Ford Configurator. It lets you instantly see what your car will look like – inside and out – from multiple angles. And a tally of your choices and their prices helps you keep to your budget. Visit www.ford.co.uk/ConfigureyourCar

Finance

When it comes to financing your car, our size and expertise means we're well placed to provide you with a wide range of finance products.

Ford Credit provides a range of finance products for your car whether you are a private or business user.

Ford Lease specialises in contract hire and leasing and provides an alternative range of finance plans which can be tailored to suit your business. Business users only.

For more information about our finance products visit www.ford.co.uk

Drive

When you drive away in your new car, we're with you all the way. Ford has the largest authorised service network in the UK to help you keep your car in the best condition.

And should your new Ford ever require accident repair, a Ford Accident Repair Centre is the best place to get your car back to its pre-accident condition and on the road as quickly as possible.

Contact

Ford Credit Customer Services 0345 712 5490

Ford Lease Customer Services 0344 600 1405

Calls to 0344 and 0345 numbers are charged at the same rate as standard 01 or 02 geographic numbers, even when calling from a mobile.

To configure your Ford online visit www.ford.co.uk/ConfigureyourCar

To look at finance for your Ford visit www.fordcredit.co.uk/BuyingAndProtectingYourFord
Business users visit www.ford.co.uk/FordFleet



Insurance

	Zetec Navigator	Titanium Navigator	Titanium X Navigator
5-door			
1.0 EcoBoost (100 PS)	9E	10E	-
1.0 EcoBoost (125 PS) with Auto-Start-Stop	13E	13E	13E
1.4 Duratec (90 PS)	8E	-	-
1.6 Duratec Ti-VCT (105 PS), PowerShift	10E	11E	11E
1.5 Duratorq TDCi (75 PS) with Auto-Start-Stop	8E	-	-
1.5 Duratorq TDCi (95 PS) with Auto-Start-Stop	11E	11E	11E

E = Exceeds security requirement for model concerned and group rating has been reduced. Insurance ratings are issued by the Association of British Insurers and are shown above in the new 1-50 rating scales.

Illustrations, descriptions and specifications. This catalogue was correct at the time of going to print. However, Ford policy is one of continuous product development. The right is reserved to change specifications, colours and prices of the models and items illustrated and described in this publication at any time. For the latest details always consult your Ford Dealer. **Optional equipment.** Throughout this publication, wherever a feature is described as being an 'Option' or 'Option Fitment/Pack' etc, you should assume that it will be at extra cost to the base vehicle, unless specifically stated to the contrary. All models and colour combinations are subject to availability. **Note.** Some images portrayed are of a pre-production model and/or are computer generated, therefore, the design/features on the final version of the vehicle may differ in various respects. In addition, some of the features shown on the vehicles may be optional. **Note.** This brochure contains both original Ford accessories as well as a range of products from our suppliers. **+**The identified accessories are carefully selected third party supplier branded accessories which do not come with a Ford warranty but are covered by the third party supplier's own warranty, the details of which can be obtained from your Ford Dealer. **Note.** The Bluetooth® word mark and logos are owned by the Bluetooth SIG, Inc. and any use of such marks by Ford Motor Company is under licence. The iPod word mark and logos are the property of Apple Inc. Other trademarks and trade names are those of their respective owners. **Note.** Some driver assistance features and safety features described in this brochure are designed to function using sensors, whose performance may be affected under certain weather or environmental conditions.

The Government fuel figures do not express or imply any guarantee of the fuel consumption of any particular vehicle. The vehicles themselves have not been tested and there are inevitably differences between individual vehicles of the same model. In addition, a vehicle may incorporate particular modifications. Furthermore, the driver's style and road and traffic conditions, as well as the extent to which the vehicle has been driven and the standard of maintenance, will affect its fuel consumption. **Insurance groups** are only as recommended by the Association of British Insurers. You should always consult your insurance adviser for confirmation.



Ford and BP – working together to reduce fuel consumption and emissions.



When you have finished with this brochure please recycle it.

Ford One Call

In the unlikely event that your Ford Dealer can't help you or if you need to speak to us directly, call 0203 564 4444

Ford Rental - local service nationwide

Car and Van rental from our latest model range. Contact your local Ford Dealer for more information

Ford Motability

Call our Ford Motability team on 0345 6040019

Finance

Ford Credit Customer Services 0345 712 5490
Ford Lease Customer Services 0345 600 1405
Calls to 0344 and 0345 numbers are charged at the same rate as a standard 01 or 02 geographic number, even when calling from a mobile



EURO NCAP advanced
2011 Reward for Ford Active City Stop



EURO NCAP advanced
2012 Reward for Ford SYNC Emergency Assistance



Sub 1-litre
Ford 1.0 litre EcoBoost

Published by Ford Motor Company Limited, Brentwood, Essex, England. Registered in England No. 235446. **FA 1572/7**
BJN 206312. FoE H54E. PN 671508/0517/9m/GBR en
May 2017.
© Ford Motor Company Limited.



www.ford.co.uk



Go Further